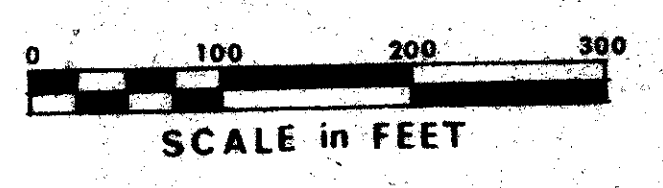
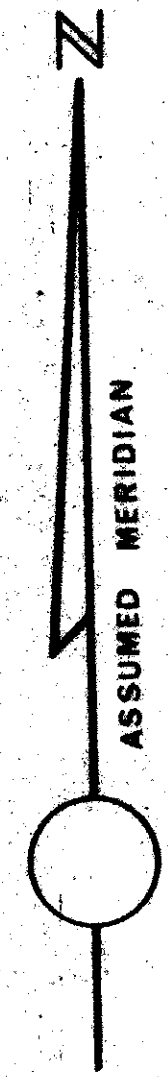
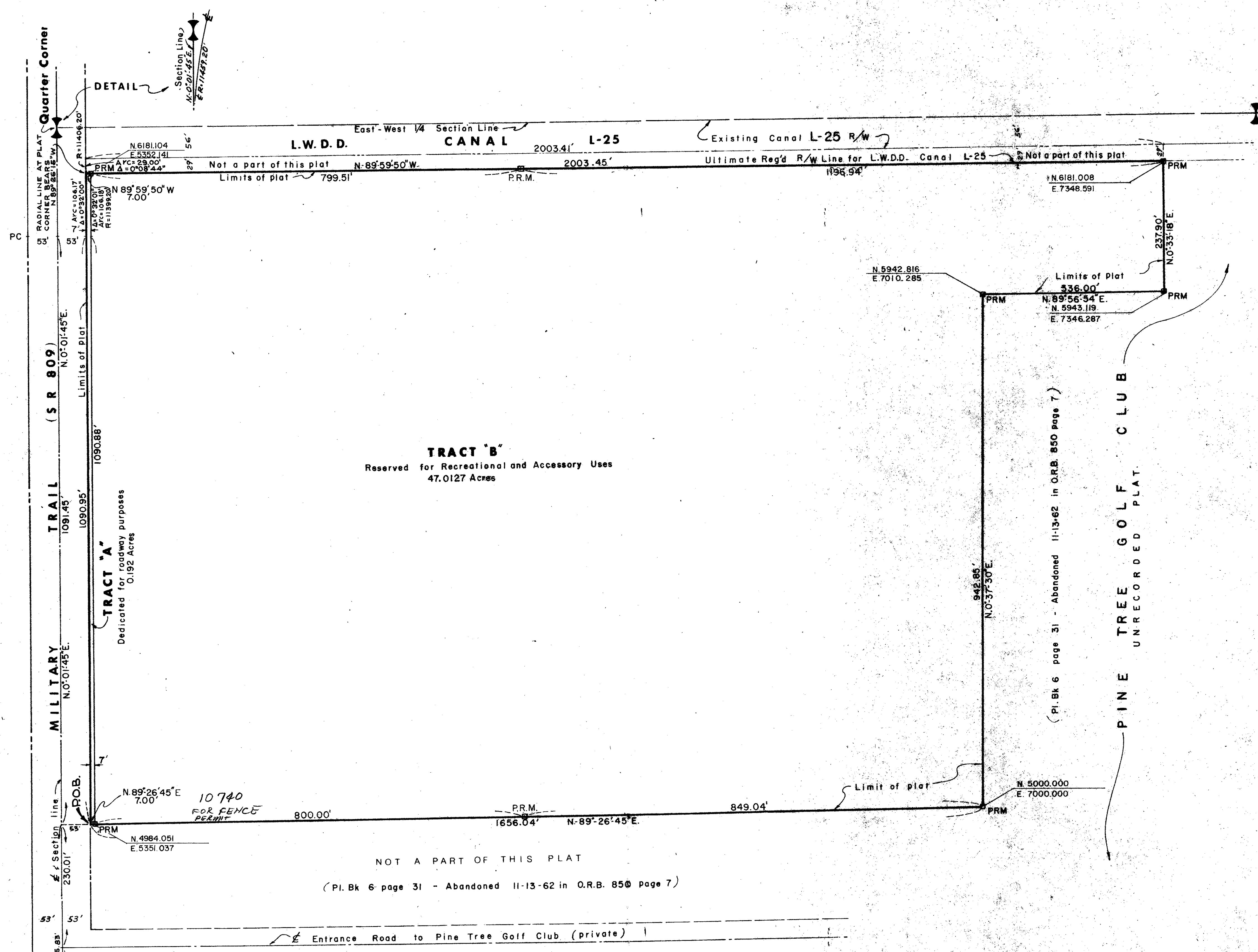


35

# A PLANNED UNIT DEVELOPMENT IN COUNTRY CLUB TRAIL

## EQUESTRIAN PLAT

IN THE SOUTHWEST QUARTER OF SECTION 25, T.45S., R.42E. PALM BEACH COUNTY FLORIDA, AND LYING IN THOSE LANDS SHOWN IN BOYNTON GARDENS AS RECORDED IN PLAT BOOK 6 AT PAGE 31 AND ABANDONED NOV. 13, 1962 IN OFFICIAL RECORD BOOK 850 AT PAGE 7  
IN TWO SHEETS - SHEET NO. 2



0226-308

31/76

# EQUESTRIAN PLAT

Field Book No. 462 Pg 45	ROBERT E. OWEN & ASSOCIATES, INC. ENGINEERS · PLANNERS · SURVEYORS WEST PALM BEACH FLORIDA	EQUESTRIAN PLAT IN SW 14 SEC 25 T.45 S. R.42E. PALM BEACH COUNTY FLA	Job No. 74-282
Design D.M. WHITE			Scale 1"=100'
Drawn W. RANTANEN	Approved	Date OCT 1974	Sheet 2 of 2
Checked D.M. WHITE			File No. B.E. 2224
Field A. SANDRICK			

11000